

How to Set Environment Variables on the Different Windows Operating System Versions

The Micro Focus PC-based Products will, at times, require the setting of environment variables in order to use the product or to perform application testing.

This document shows how environment variables can be set on the following Operating Systems:

- Windows 95
- Windows 98/ME
- Windows NT 4.0
- Windows 2000
- Windows XP

Note: *After you make the proposed changes under Windows 95, 98, and ME, you will need to reboot your workstation for the changes to take effect.*

Note: *A difference between Windows 9X/ME and Windows NT, 2000, and XP is that under NT, 2000, and XP you can set System environment variables and User environment variables. The distinction between the two is that the System variables are for Global use, in other words, all users, and the User variables are only for the logged on user.*

Here are some examples of how an existing environment variable, such as PATH, COBDIR, etc., can be altered

Example:

To append a full pathname to the beginning of the existing path

➤ `set path=c:\source;%path%`

To append a full pathname to the end of existing path

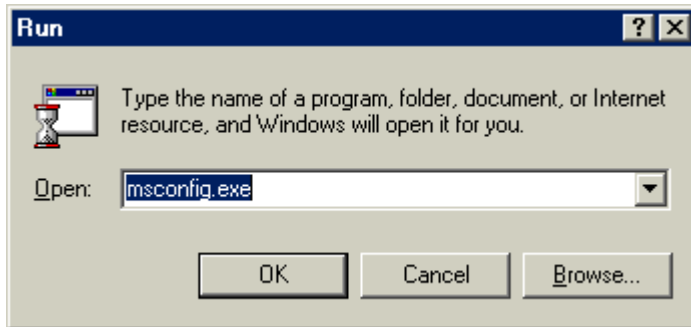
➤ `set path=%path%;c\datafiles`

Windows 95

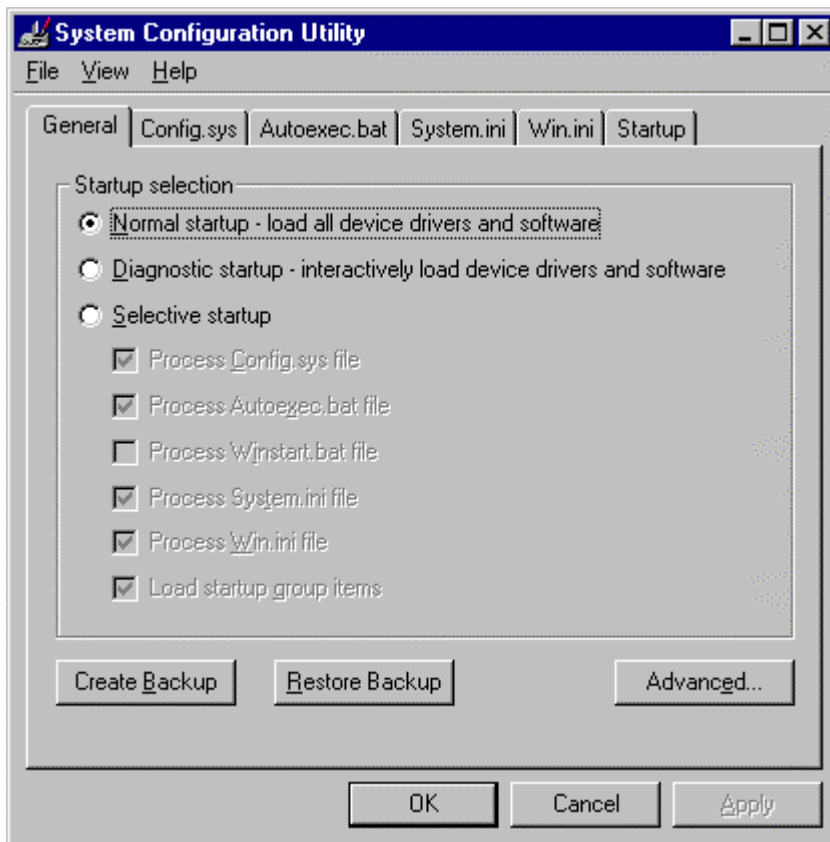
For this operating system you have to edit autoexec.bat and add or change the environment variables in the example above.

Windows 98

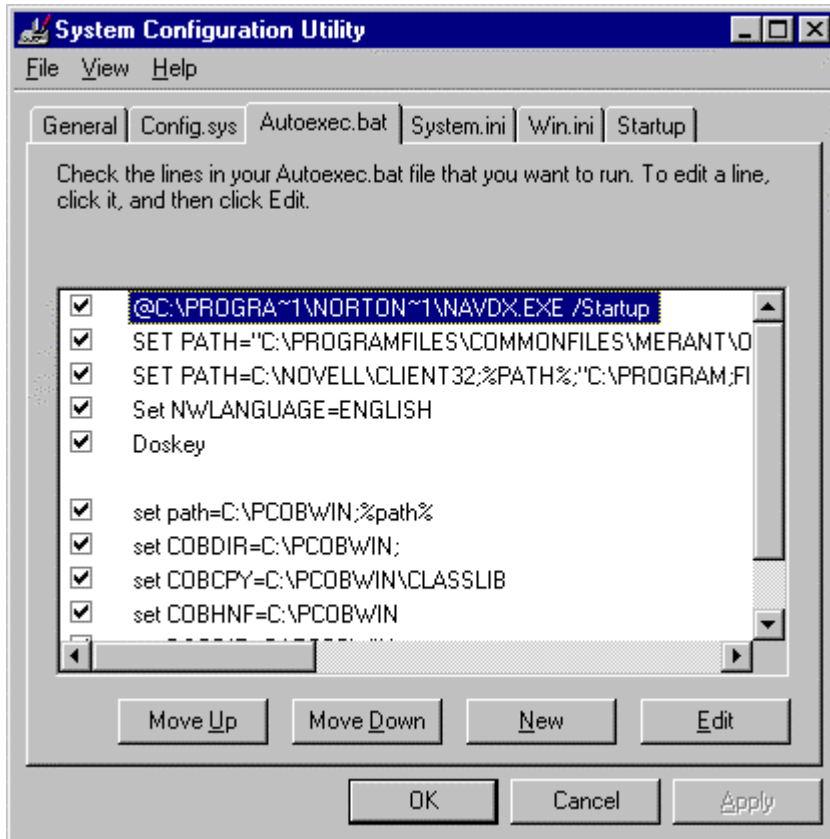
GOTO Start -> Run : enter msconfig.exe



Click OK and this window will appear:

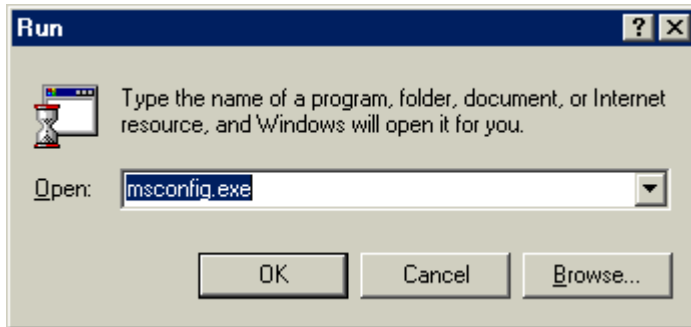


Next, click on the Autoexec.bat tab and make your changes to the autoexec.bat file for the environment variables you need to change or add.

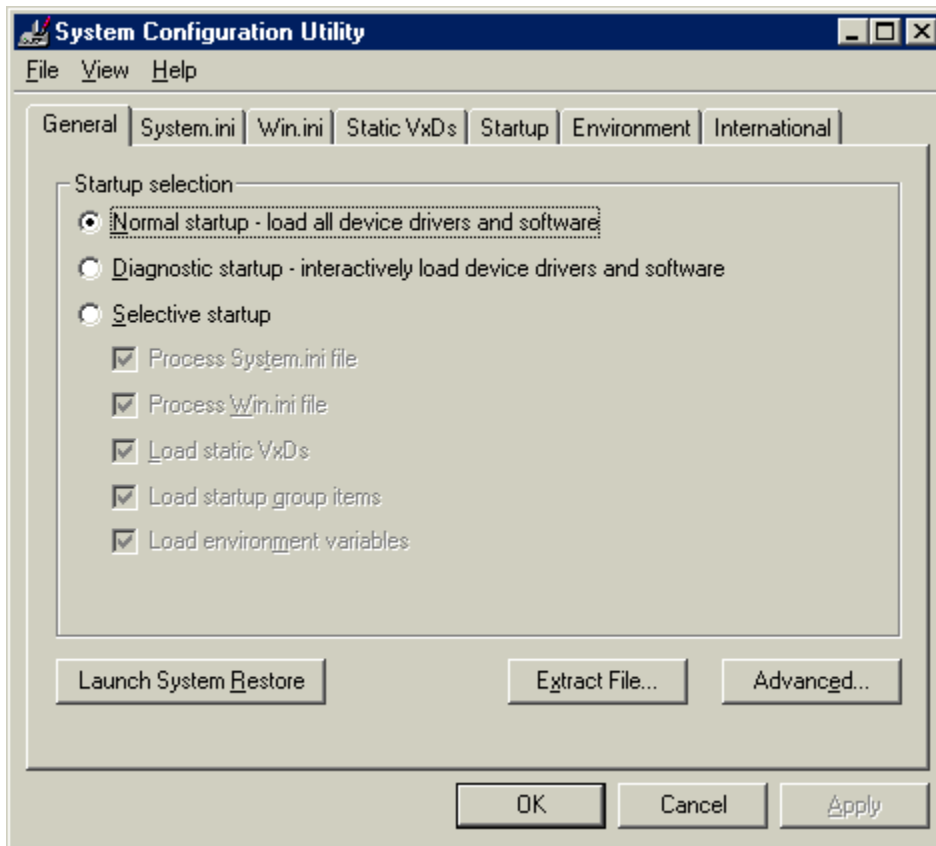


Windows ME

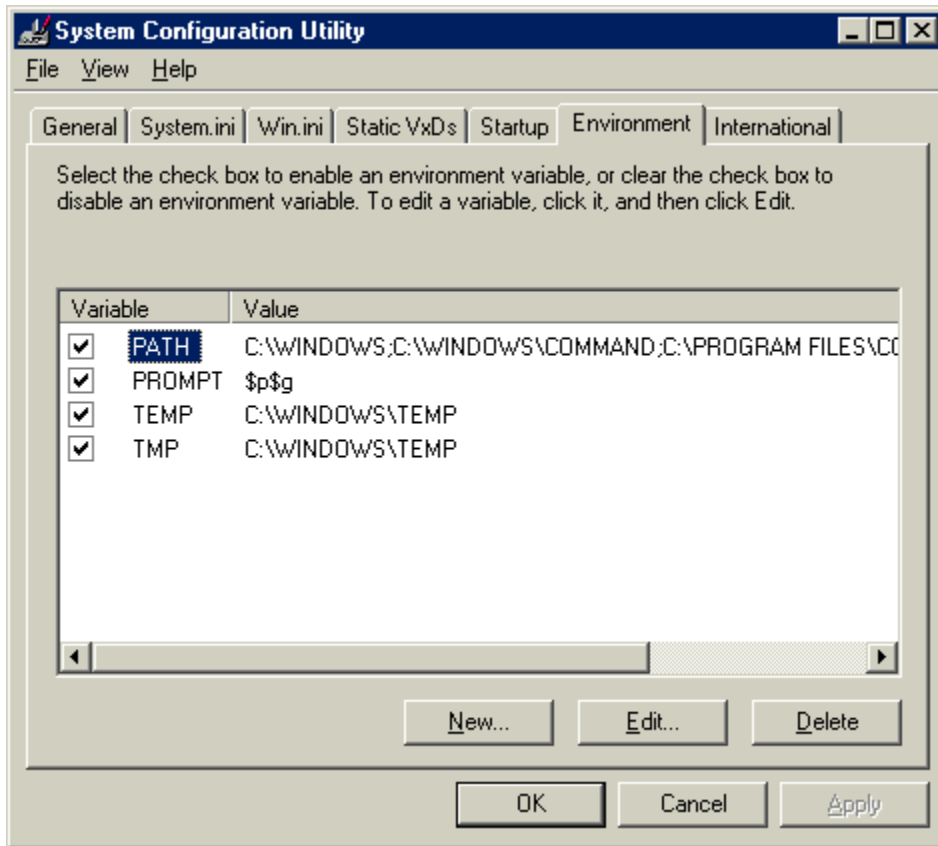
GOTO Start -> Run : enter msconfig.exe



Click on OK and this window will appear:



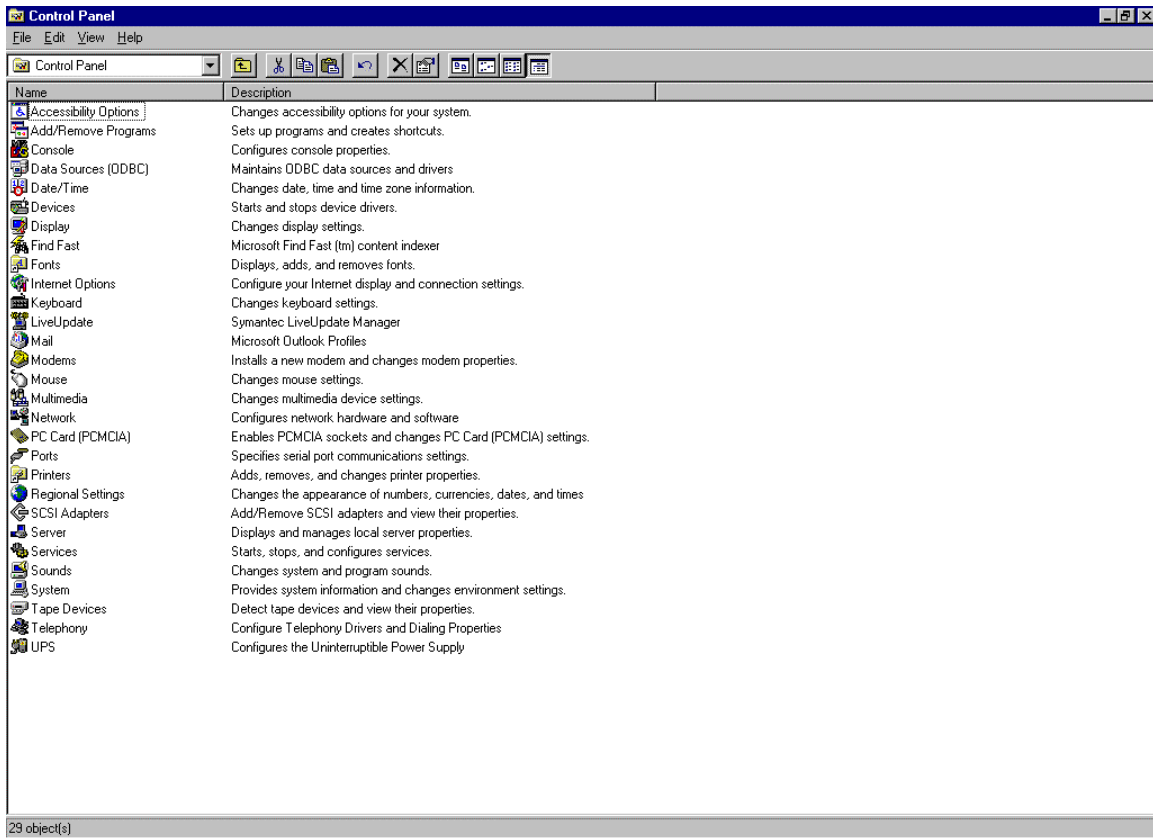
Click on Environment tab:



Now you can set or change environment variables.

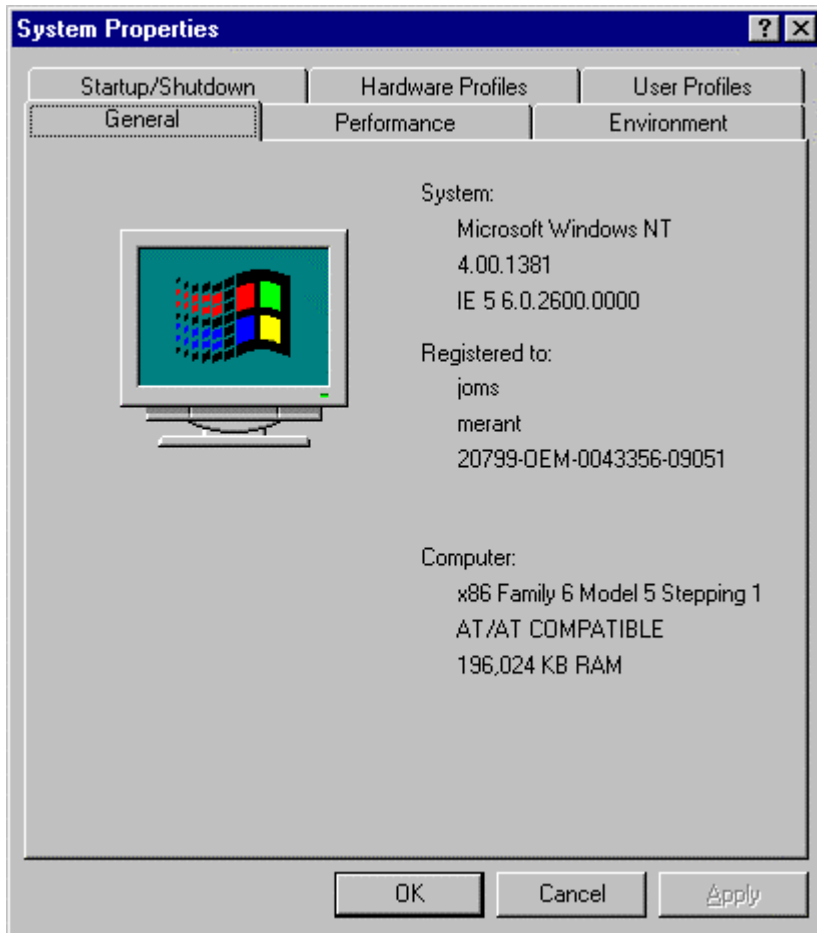
Windows NT 4.0

GOTO Start -> Settings -> Control Panel

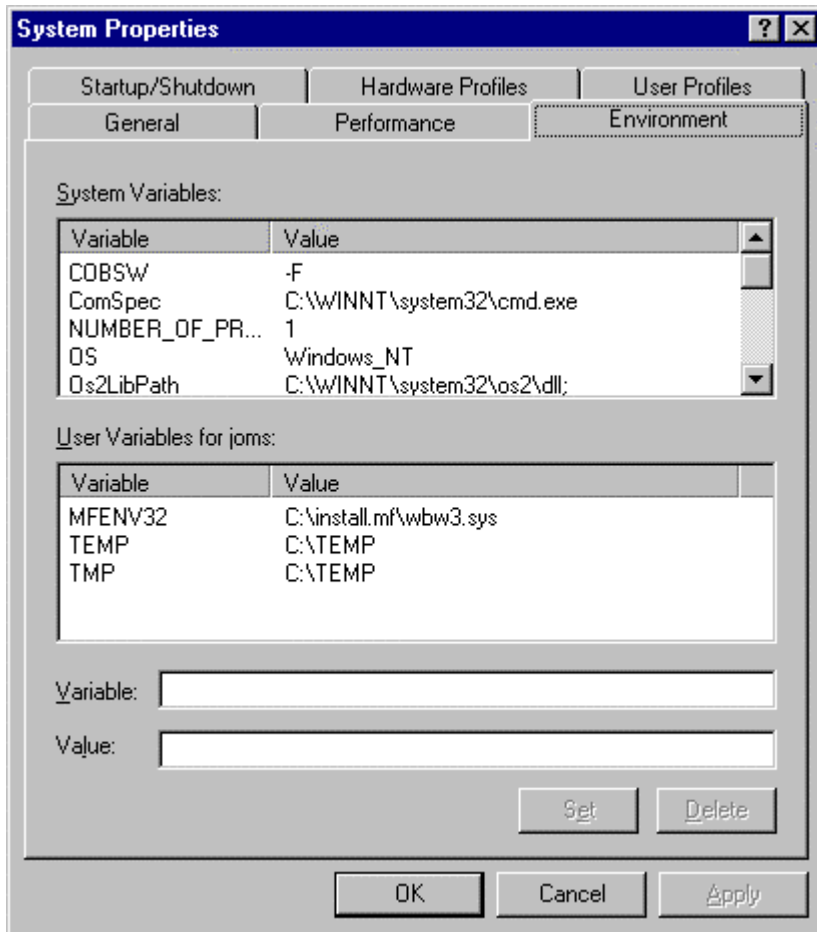


Click on "System"

This window will appear:



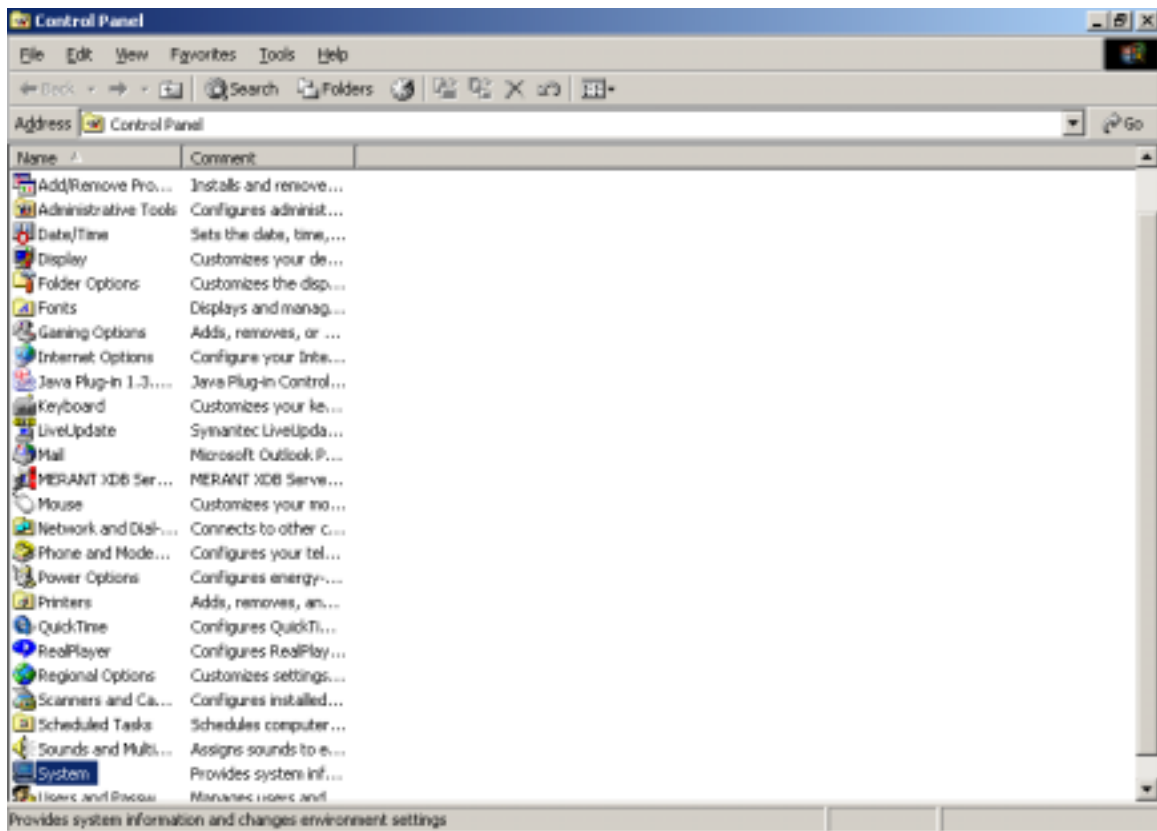
Click on Environment tab and this window will appear:



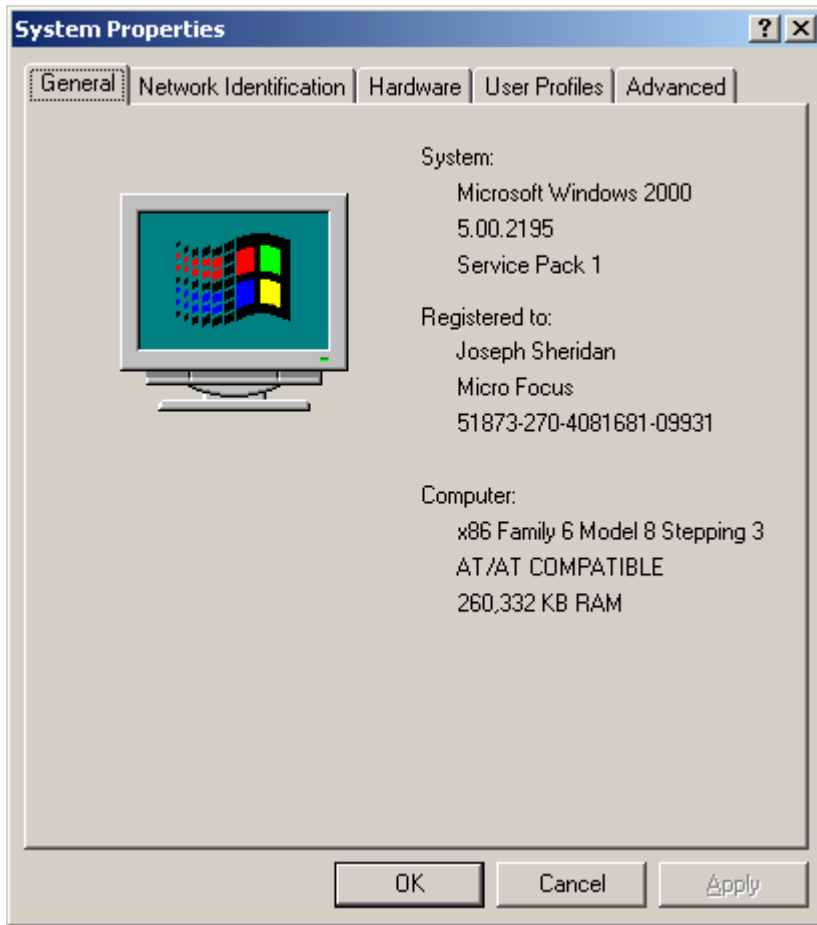
Now you can set or change environment variables. System Variables is a global change where as User Variables is only for that user.

Windows 2000

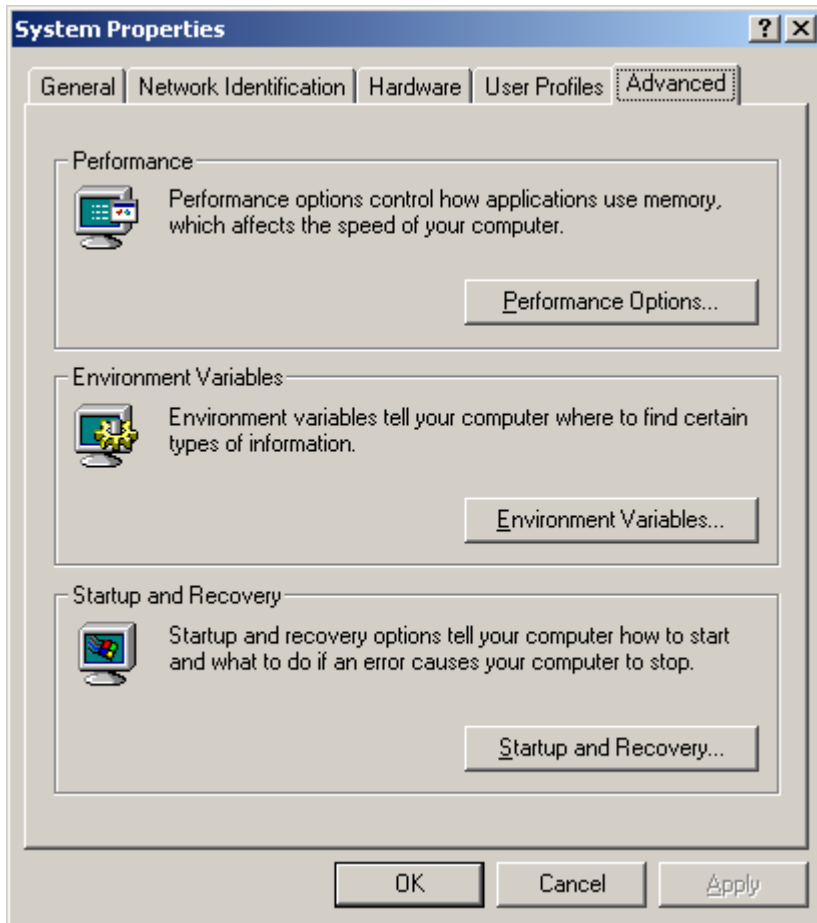
GOTO Start -> Settings -> Control Panel



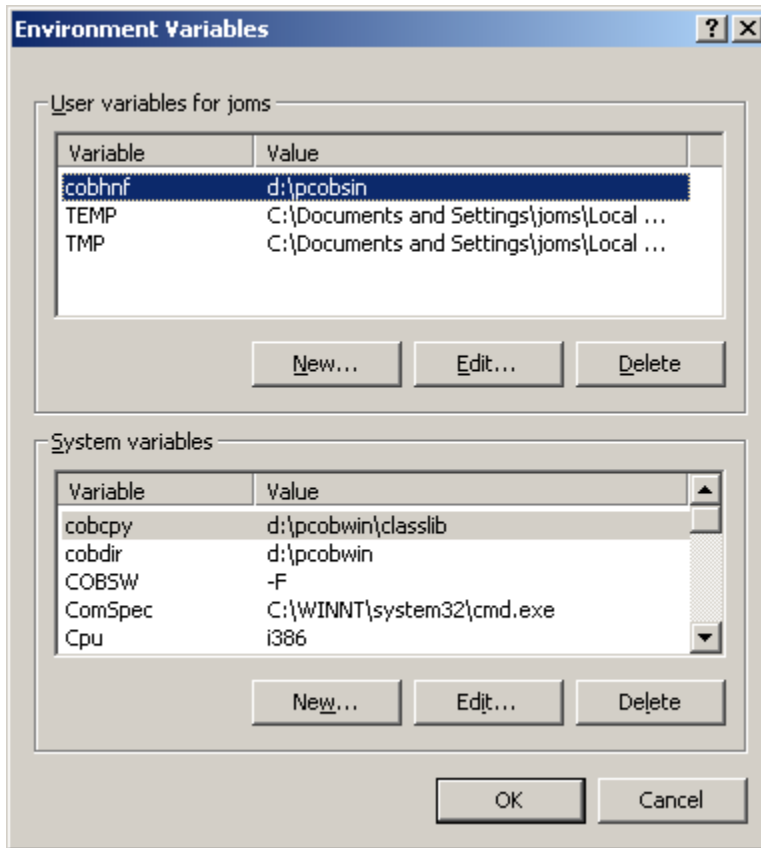
Click on System and this window will appear:



Click on the "Advanced" tab and this window will appear:



Click on Environment Variables and this window will appear:

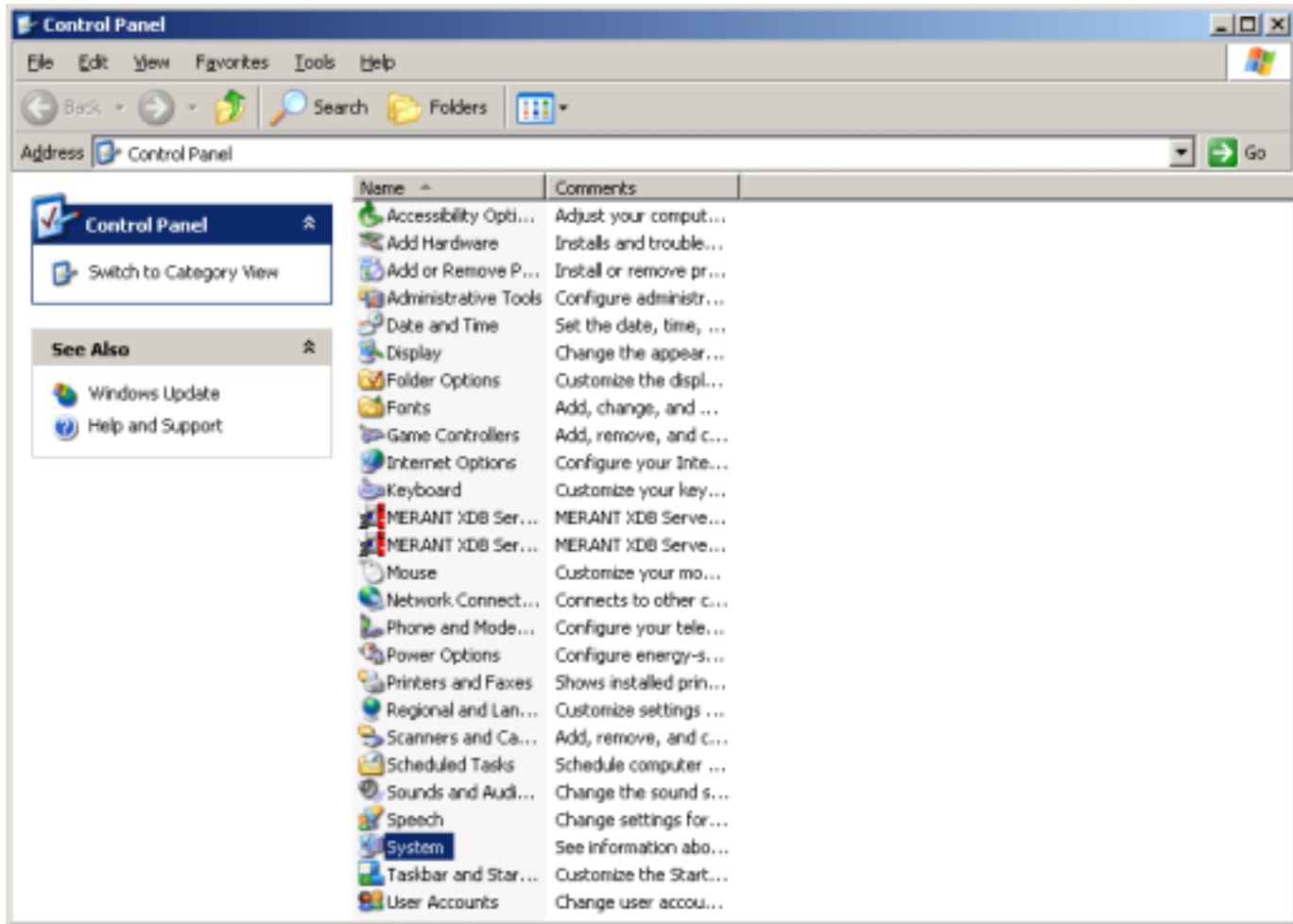


Now you can set or change your environment variables.

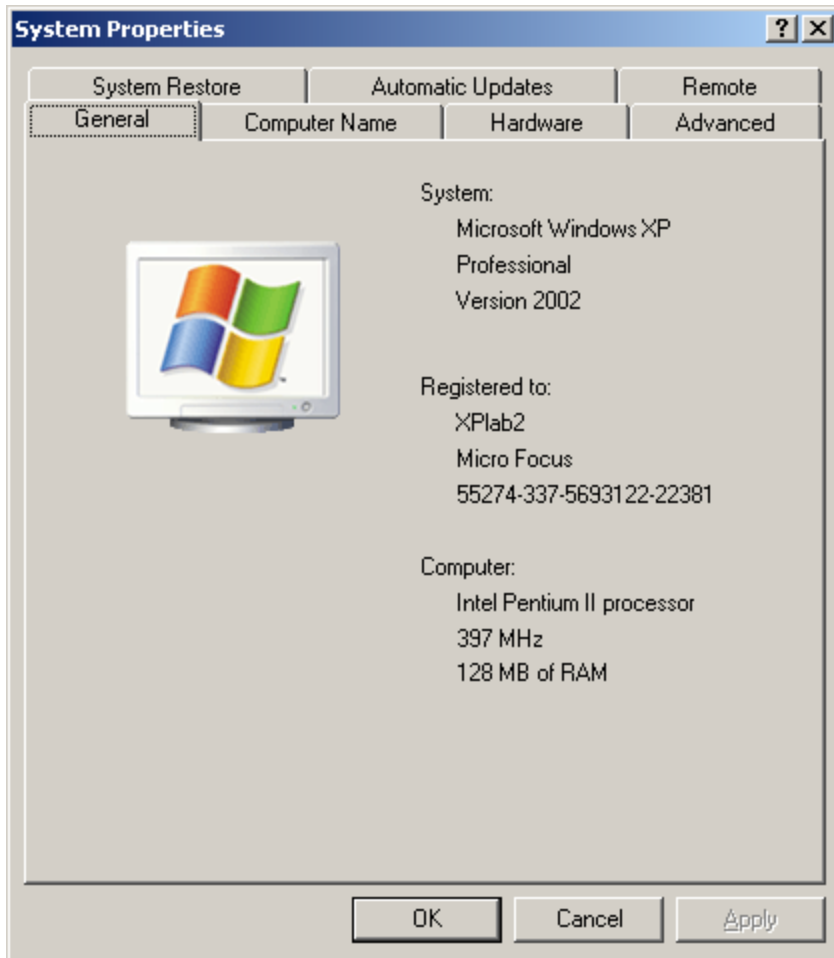
Windows XP

Go to Start -> Settings-> Control Panel

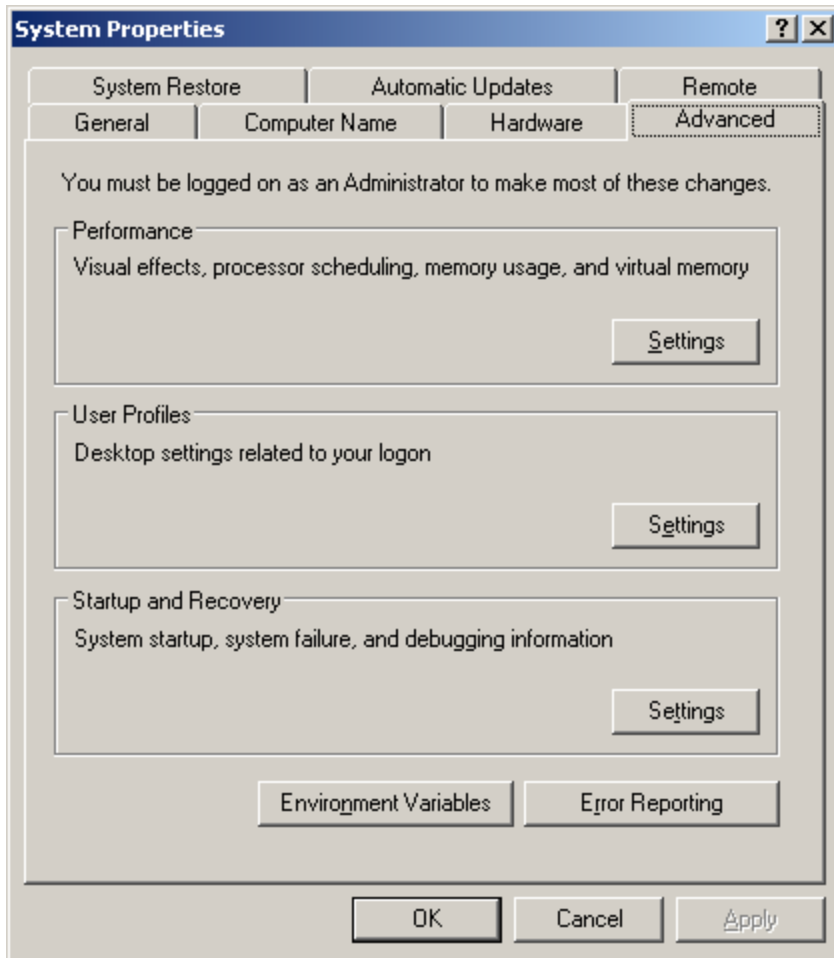
Click on System



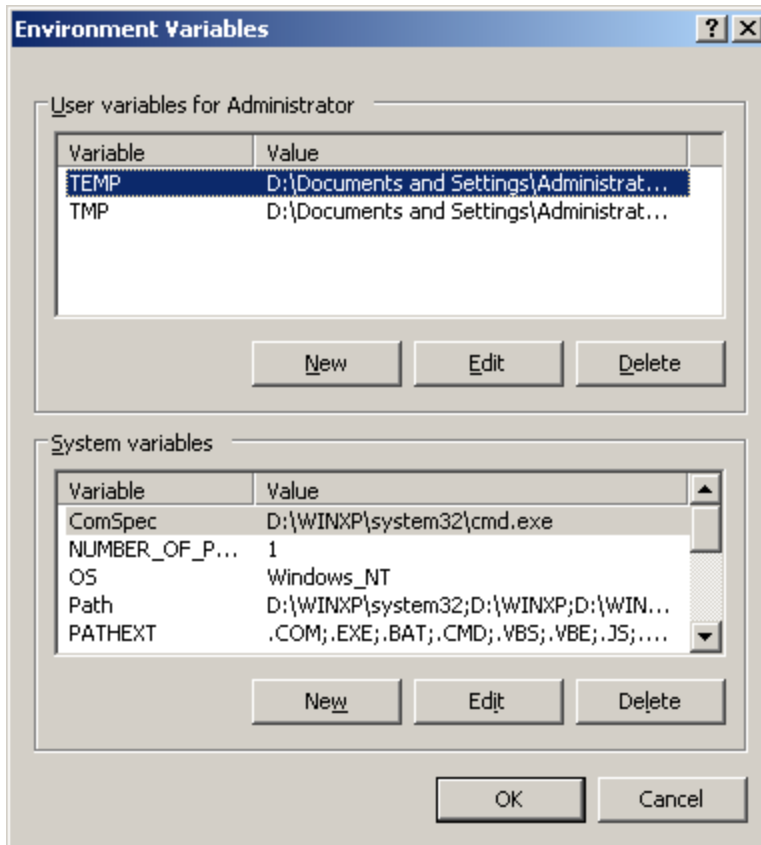
Click on System and this window appears:



Click on Advanced Tab:



Click on Environment Variables at bottom and this window appears:



Now you can change or add environment variables. It is suggested that you should be making changes in the System variables.